

# Instructor and Staff Biographies



**Janice Yasui – SonTek/Xylem Product Manager** ([Janice.Yasui@xyleminc.com](mailto:Janice.Yasui@xyleminc.com))

A part of the SonTek team since 2008, Janice combines her extensive SonTek technical knowledge with an understanding of customer needs to deliver the best products possible. Prior to SonTek, Janice enjoyed applying her academic background in oceanography to the practical world of hydrographic surveying for NOAA. Janice's water-based career started in the US Coast Guard, and while she is now land-based she is still fueled by a love of water and solving water resource issues.



**Dr. Art Schmidt – Associate Professor of Civil and Environmental Engineering at the University of Illinois at Urbana-Champaign**

Dr. Art Schmidt is a Teaching Associate Professor of Civil and Environmental Engineering at the University of Illinois at Urbana-Champaign. His research focuses on surface-water hydraulics and hydrology, focusing on methods to provide improved quantitative description of flows. Art brings a unique coupling of many years of field data-collection experience with extensive training and experience in numerical methods to simulate complicated hydrologic and hydraulics processes. He started his engineering career with several years performing aerial photo-control, topographic, and bathymetric surveys. He has worked as a hydrologist for the U.S.G.S for 12 years and started using hydroacoustics in 1993.



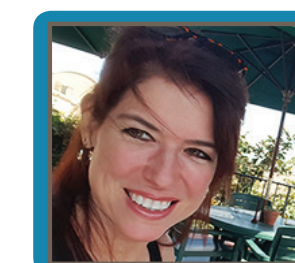
**Kevin Labbe – Xylem/SonTek Application Engineer** ([kevin.labbe@xyleminc.com](mailto:kevin.labbe@xyleminc.com))

Kevin started his work with acoustics in 1996 and throughout his USGS career, was involved with Index Velocity computations. At the end of his tenure with the USGS, he was the database administrator and part of the Central Region Advisory Committee on Data. He began his new career with YSI in 2003, and has travelled extensively in the U.S. in support of both SonTek and YSI products and services.



**Mark Lynch – Midwest Technical Sales, Xylem Analytics** ([mark.lynch@xyleminc.com](mailto:mark.lynch@xyleminc.com))

Mark received a degree in Fish and Wildlife Conservation from the University of Illinois in Champaign/Urbana in 2009. He has worked for the USGS in Illinois as a hydrologic technician, where he was responsible for installing, operating, and maintaining surface water, groundwater, and water quality stations in Illinois. Over his ten-year USGS career, he transitioned from a tech that installed and operated gaging stations, to an instructor and mentor for various aspects of work including data management, hydro-acoustics, and systems efficiencies within the government context. In 2017, he joined Xylem and now works with customers throughout the Midwest supporting their water related projects.



**Christina Iarossi – SonTek Senior Marketing Manager** ([christina.iarossi@xyleminc.com](mailto:christina.iarossi@xyleminc.com))

Chris has a degree in broadcast journalism from the University of Guam and started her career as a reporter and news anchor for an NBC affiliate station on Guam, and correspondent for CNN Asia. She was later recruited by Citigroup as Public Relations/Marketing Communications Manager, working in the financial services industry for eight years managing the "Citibank Women in Business" program and establishing strategic alliance partnerships with world-recognized brands such as Shell Inc. and United Airlines. She eventually relocated to San Diego and joined the SonTek team in 2006.